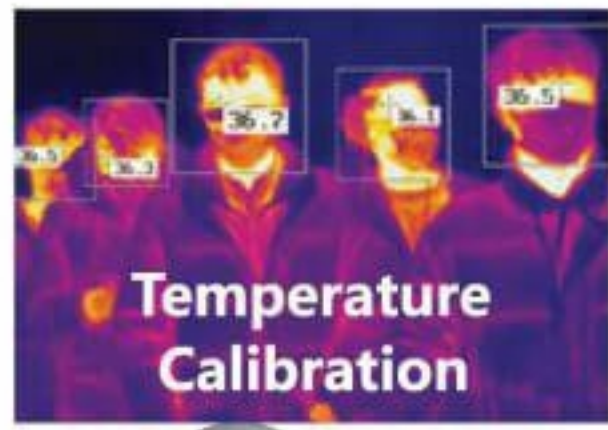


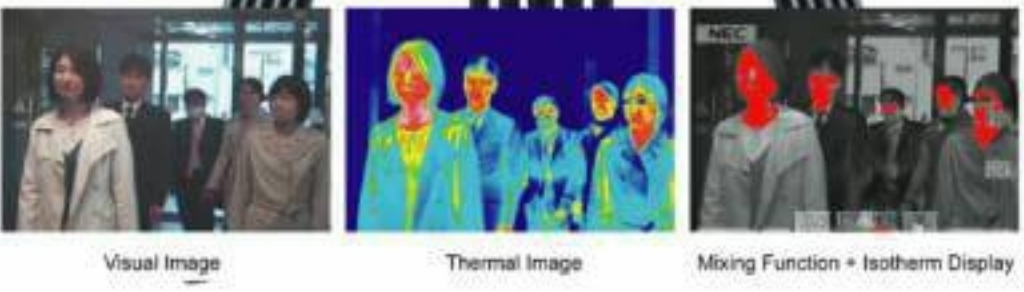
HIP CM95H

DUAL VISION BODY TEMPERATURE SCREENER

Dual Vision Body Temperature Screener



Temperature Calibration



The dual vision body temperature screener is an intelligent body temperature screening device that integrates infrared thermography temperature measurement and high-definition visible imaging. The device has powerful front-end processing capabilities, and can be connected to a matching temperature screening comprehensive management software through a network to observe high-quality thermal imaging and visible video in real time. Through simple parameter setting, it can realize the identification of abnormal body temperature in the area and the monitoring of body temperature over-limit alarm. The temperature screener can be widely used in public places such as airports, railway stations, subway stations, hospitals, banks, commercial supermarkets, conference centers, schools, and industrial parks, as well as various centralized office sites, helping to efficiently and quickly take body temperature screening and monitoring in each scene.



DUAL VISION INTELLIGENCE	FAST DEPLOYMENT	HIGH STABILITY
<small>USE YOUR CORPUS FOR INTELLIGENT AND EFFICIENT IDENTIFICATION, DETECTION, AND EASY TO TRAVEL.</small>	<small>TURN ON TO USE, NO NEED BLACK BODY TO ADJUST ACCURATE BODY TEMPERATURE MEASUREMENT MAINTAINANCE FREE.</small>	<small>PERFECT GIGGLE DESIGN, MULTI SCENARIO APPLICATION, AND LOW NOISE, EASY TO USE.</small>

ISO9001:2015

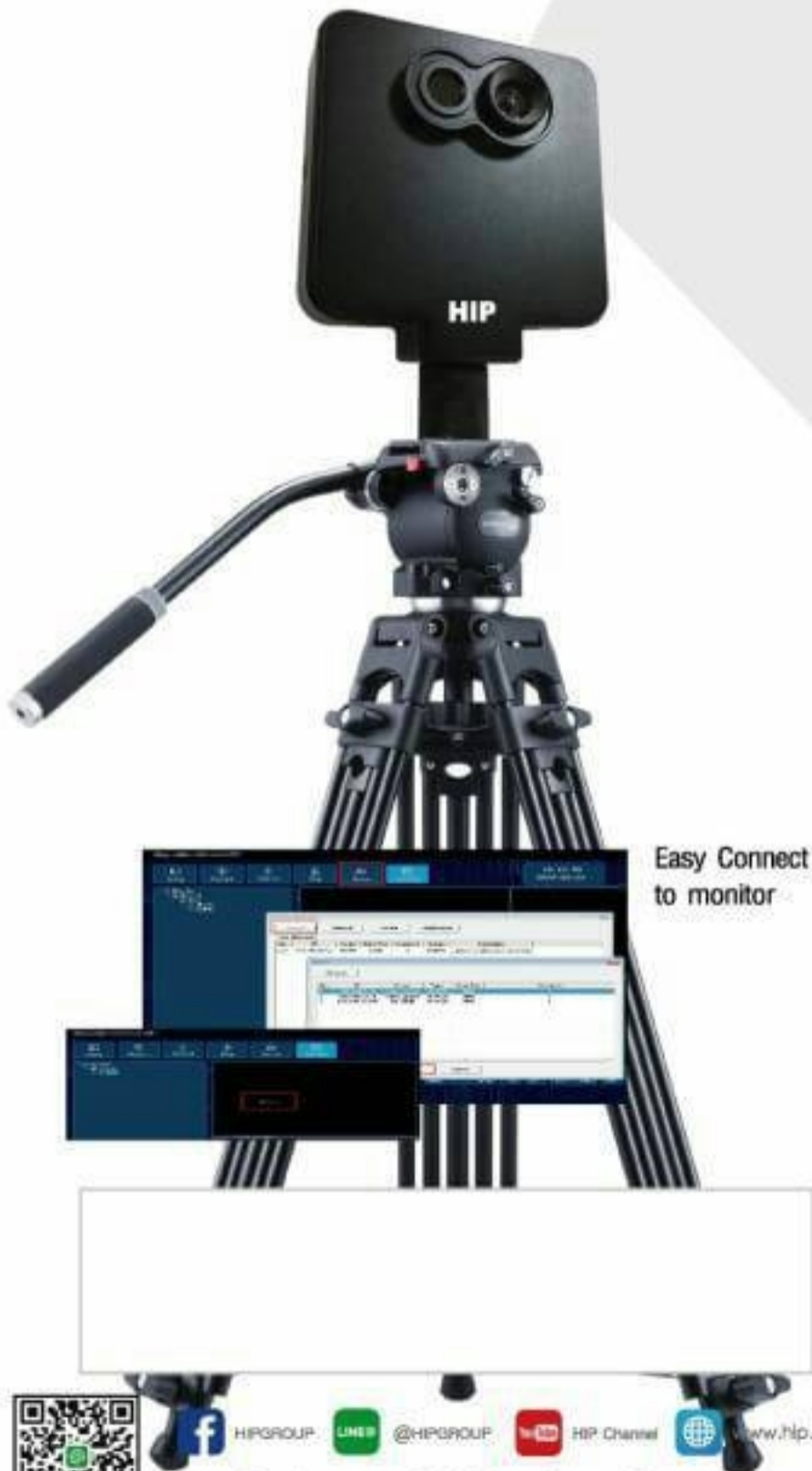
THE BEST SECURITY SOLUTION





DUAL VISION BODY TEMPERATURE SCREENER CM95H

- Dual Vision Intelligence**
 Dual vision configuration, intelligent and efficient personnel identification, more intuitive and easy to trace back.
- Fast Deployment**
 Support fixed point and mobile deployment, fulfill different application scenarios, easy operation, maintenance free.
- Flexible and Expandable**
 Windows and Linux SDKs are available, with rich functions and standard interfaces, making system integration and secondary development easy.



Easy Connect to monitor

Software Use



APPLICATIONS



Product Specification

Specifications	Description	
Basic	Dimension	95mm*88mm*40mm
	Weight	≤420g
	Operating Humidity	10%~45°C (The best working temperature for body temperature measurement is 16-32 °C.)
	Operating Temperature	EC 60068-2-30/24h 85%RH
	Power Supply	DC12V (9V ~ 14V)
	Power Consumption	≤3W
Thermal Cam	Sensor Technology	Uncooled FPA
	Max Image Size	160*120
Thermal Cam	FOV	57° × 44.3°
	Spectrum	8μm ~ 14μm
	NETD	≤50mk
Visible Cam	Color Palette	Iron Red, Rainbow, White Thermal, Black Thermal, etc.
	Sensor	1/2.5 inch CMOS
	Pixel	2 mega pixel
	FOV	80° × 65°
	Resolution	1920*1080
Measurement	Range	28°C ~ 45°C
	Accuracy	±0.3°C (Human Body 33~40°C)
	Regional	Support up to 6 settable region temperature measurement, alarm type is independently set.
	Accurate Distance	Recommend 1m ~ 2m
	Abnormal Alarm	<ul style="list-style-type: none"> Higher than the highest temperature / lower than the lowest temperature / between / beyond The highest temperature / lowest temperature alarm threshold settings Support the configuration of the time period for abnormal temperature alarm detection
Image	Video Output	Support PAL/NTSC
	Main-stream (Resolution)	Visible: 1080P/720P settable Thermal: 640*480
	Sub-stream (Resolution)	Visible: D1/CIF; Thermal: VGA640*480/QVGA320*240
Network	Protocol	ICMP, TCP, UDP, RTP, RTSP, DHCP, PPPOE, UPNP, DDNS
	Previews at the same time	6
	User Rights	Administrator/High Level Operator/General Operator
	Security Mode	Authorized username and password
	Compression	H.264/H.265

