



HOUSEHOLD SLIDING DOOR

Installation manual



H O U S E H O L D S L I D I N G D O O R

Contents

Product character..... 2

Application..... 2

Technical parameter..... 2

Spare part introduction..... 3-4

Installation 5

Application of mounting bracket 6

Installation of belt connector 6

Installation of Mecahnism 1 (Use bracket)..... 7-11

Installation of Mecahnism 2 (Top mounting) 12-14

Data adjustment 15-16

Setting of wireless push button..... 17

Terminal introduction 17

Trouble shooting and solution 18

Product character

- 1.Easy for instal,without change existing door structure.
- 2.Compact size,Nice appearance and modern design.
- 3.System can apply with sensor,remote control,push button, pet switch,photocell,card reader,lock and so on.
- 4.Window and door mode can be switched Arbitrarily.
- 5. 433.92hz module,can be suit with smart-home.

Application

- A. Door of kitchen and balcony.
- B. office, shop front and aisle.
- C.French window or other sliding window.

Technical parameter

Power supply :	100 -240 V
MAX Weight :	80 KGS
MAX width :	2 Meter
Standard track :	2.2 Meter
Color :	White/ Black
Product weight :	3.0 KG S
Product measurement :	22000 mm *72 mm *63 m m

Spare part introduction

Cover



Drive unit



Motor

Controller

Belt connector

Belt

Idler pulley



Wall mounting wireless push button



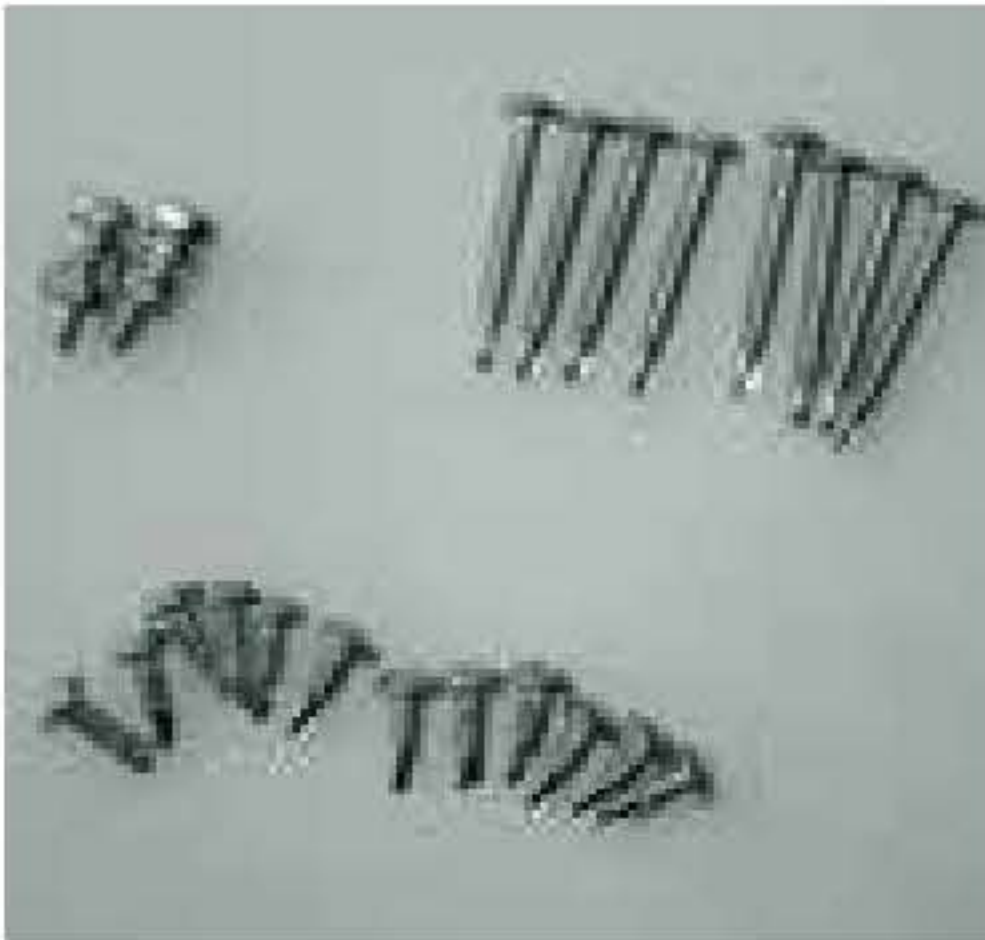
Power pack

Mounting bracket



Spare part introduction

Screw



3mm Allen key



Screw Driver



6key remote(optional)



wirless sensor (optinal)



wired sensor (optinal)



Install tools

Saw



Pistol Drill

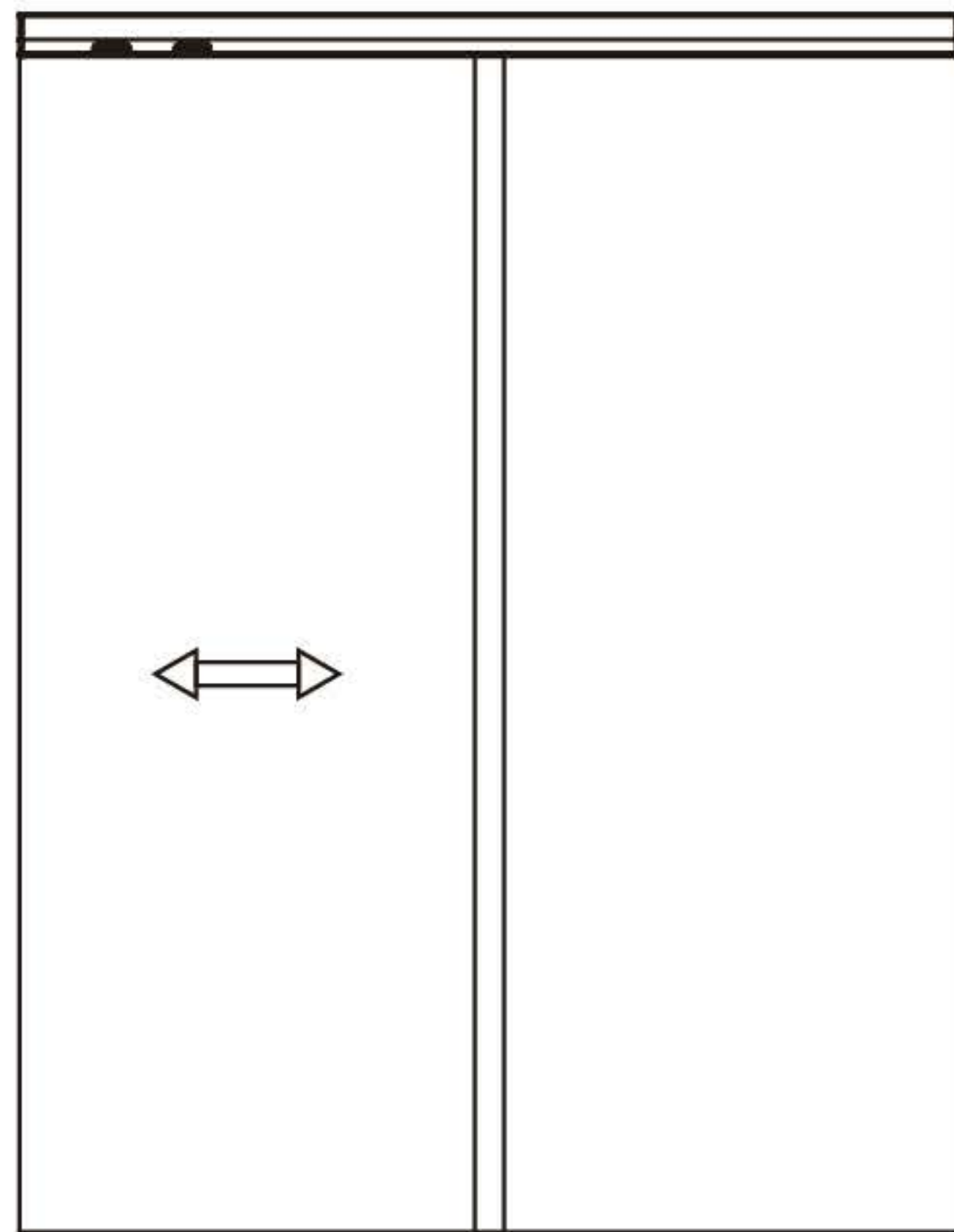


Pencil

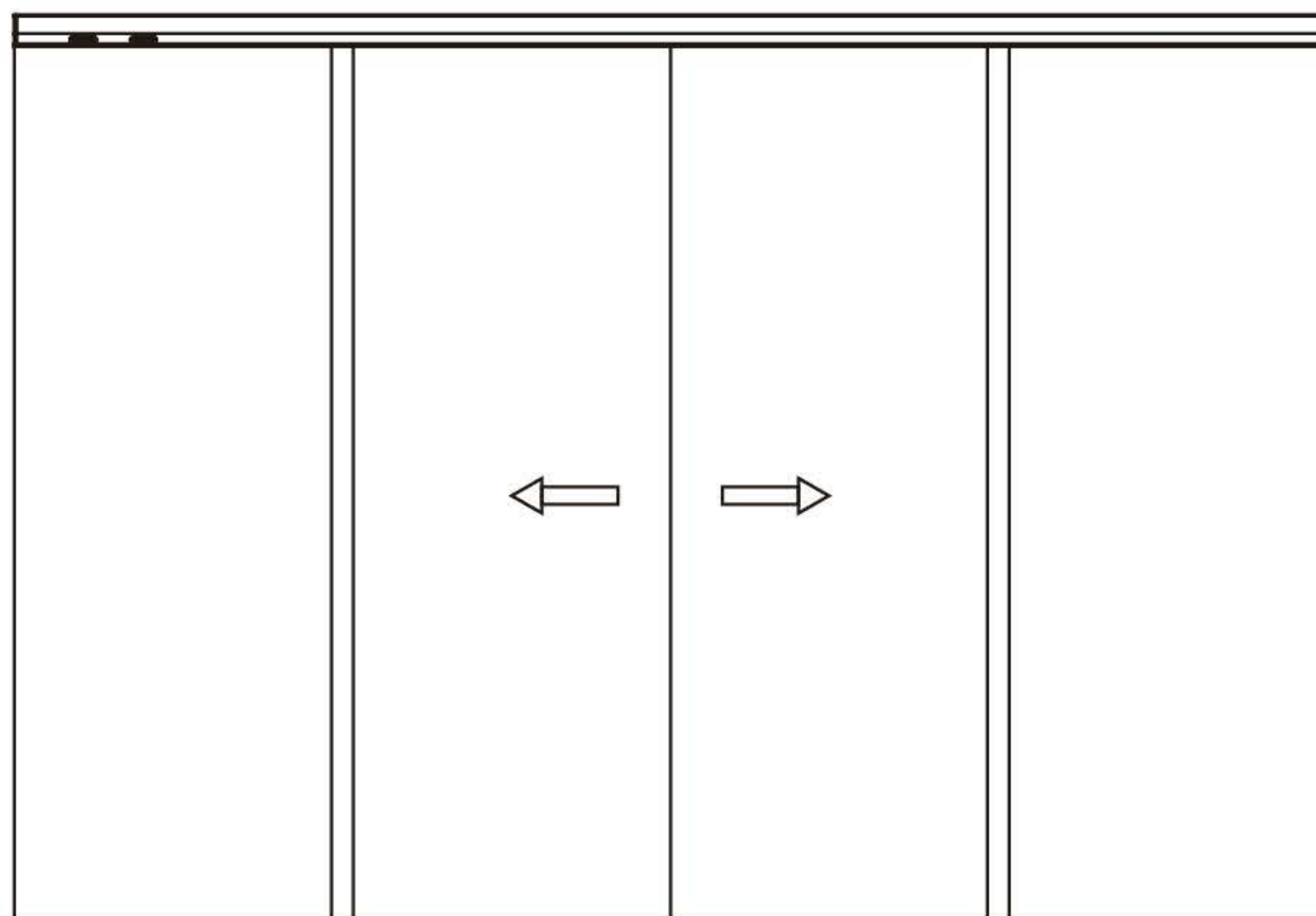


Installation

Single open



double open



Application of mounting bracket



Installation of belt connector

Two install method of belt connector, default installation is method 1

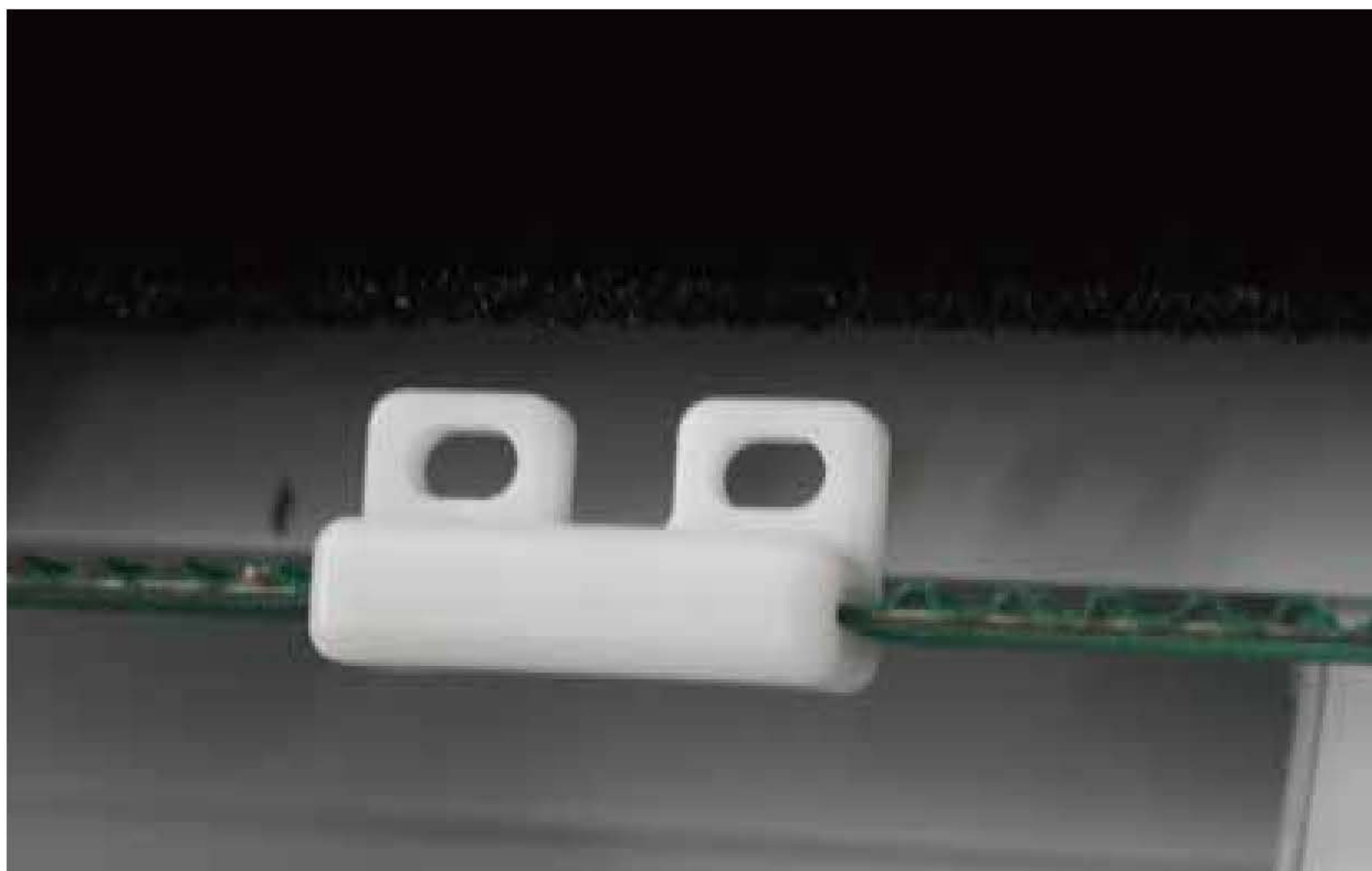


Installation of Mecahnism 1 (Use bracket)

1. Move the operator to ensure the belt connector well fix and tighten on the door leaf

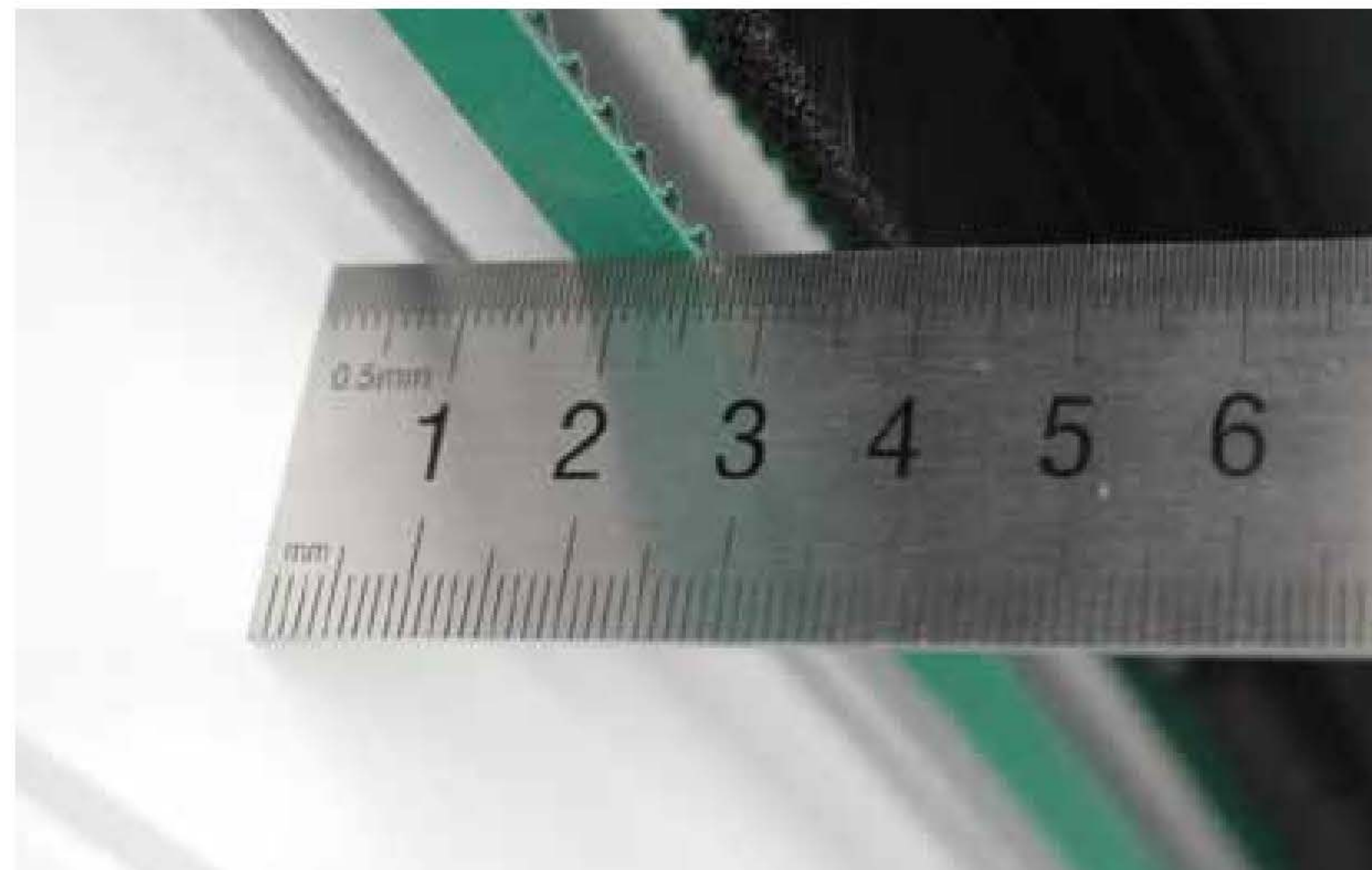


2. Remove the metal part from belt connector



Installation of Mecahnism 1 (Use bracket)

3. Move the operator to ensure the distance between door leaf and belt is around 17mm



4. Tighten the screw on the install plate



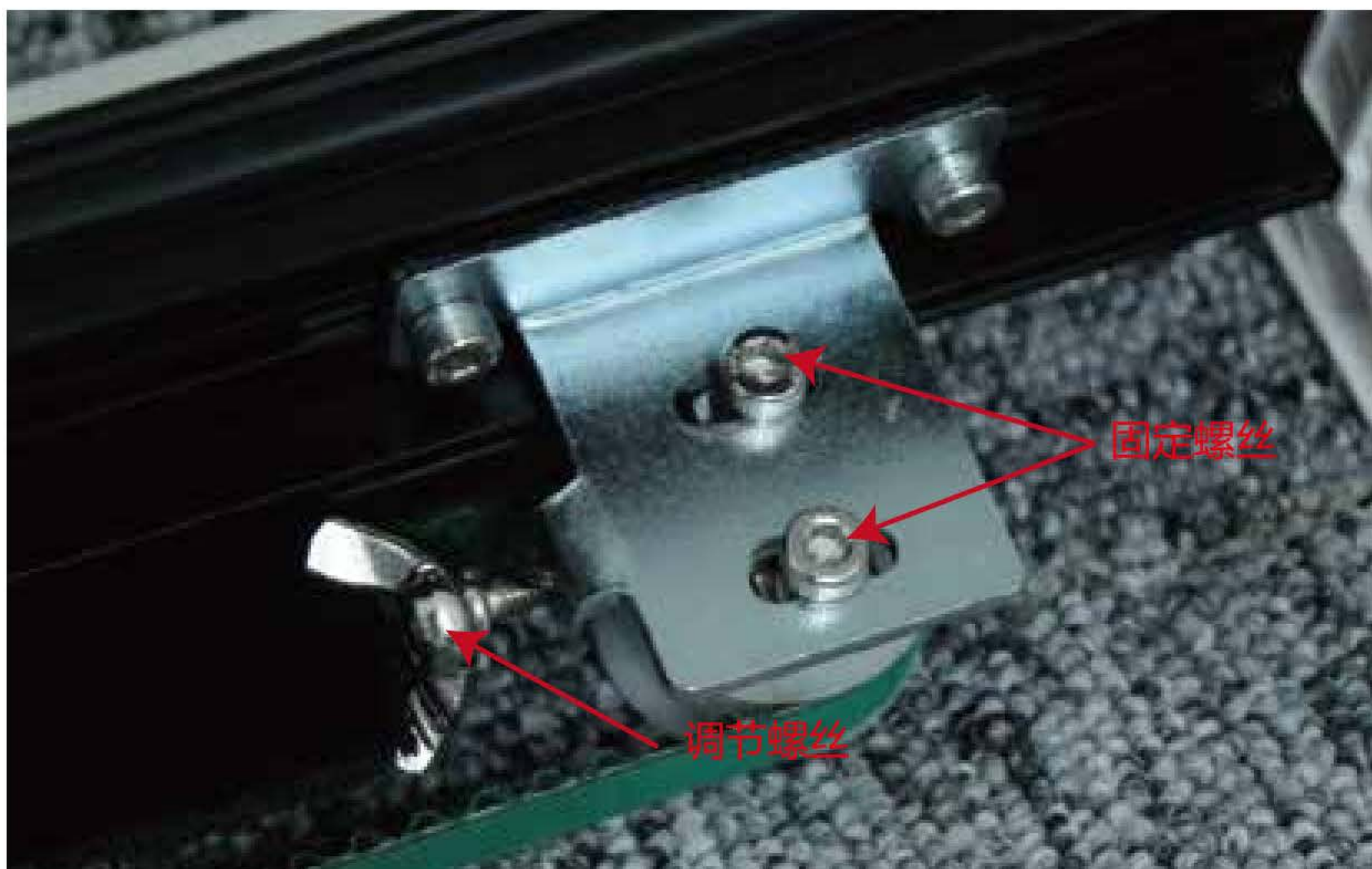
Installation of Mecahnism 1 (Use bracket)

5.Move the belt connector to the middle of door leaf , connect the door with belt connector



6.Tension adjustment

Loosen the fix screw, adjust the belt tension by tighten adjustment screw clockwise



Installation of Mecahnism 1 (Use bracket)

7.Install the wirless push button according to requested position



8.Full view after installation



Installation of Mecahnism 1 (Use bracket)

9. Power on and adjust the operator (refer to page 16)



10. Put on cover of operator after adjustment

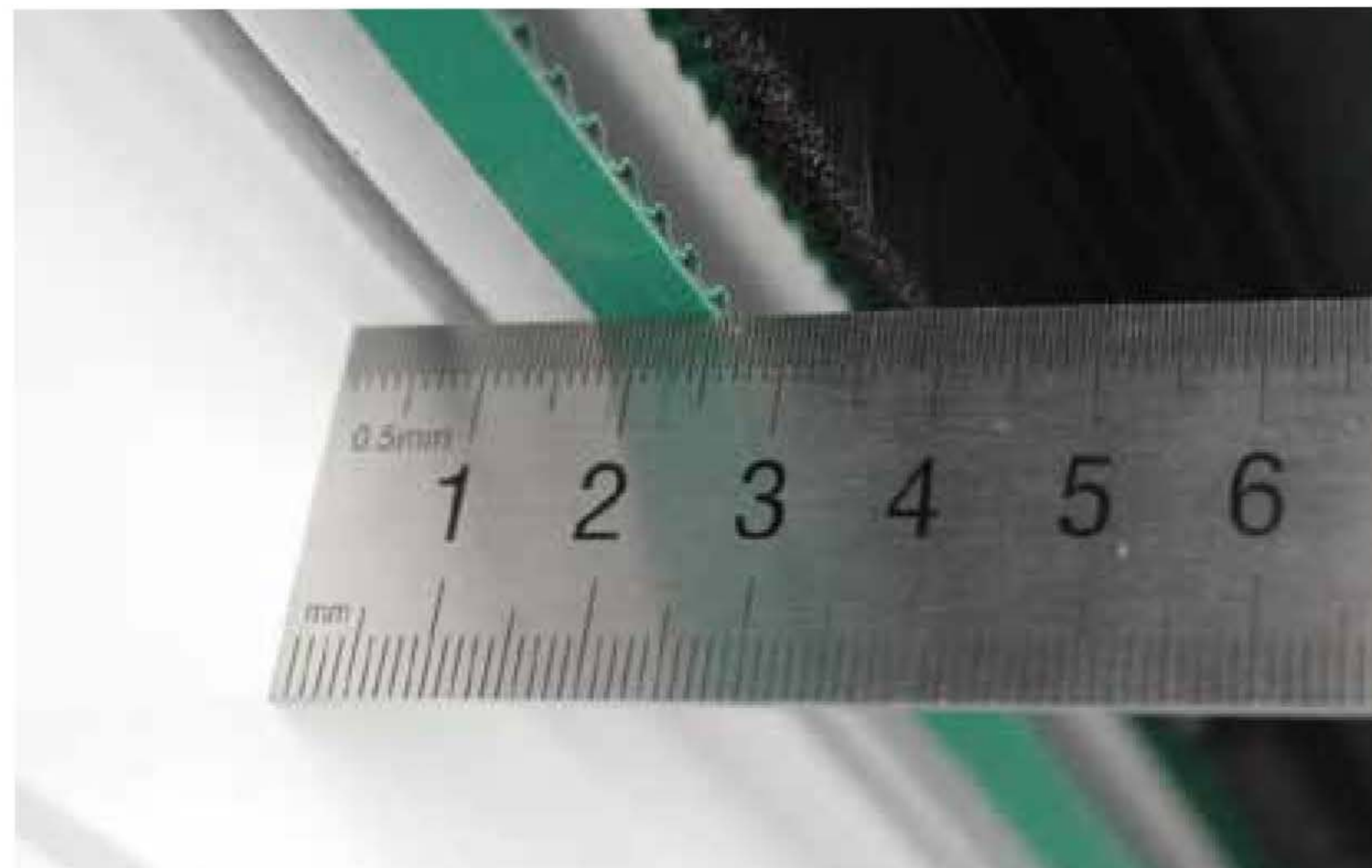


Installation of Mecahnism 2 (Top mounting)

1. Cut the length of operator refer to door size (Reduce 5cm from door size)
2. Put the operator to correct position (refer to the Pic) , leave 5cm on the left And make sure the right side close to door

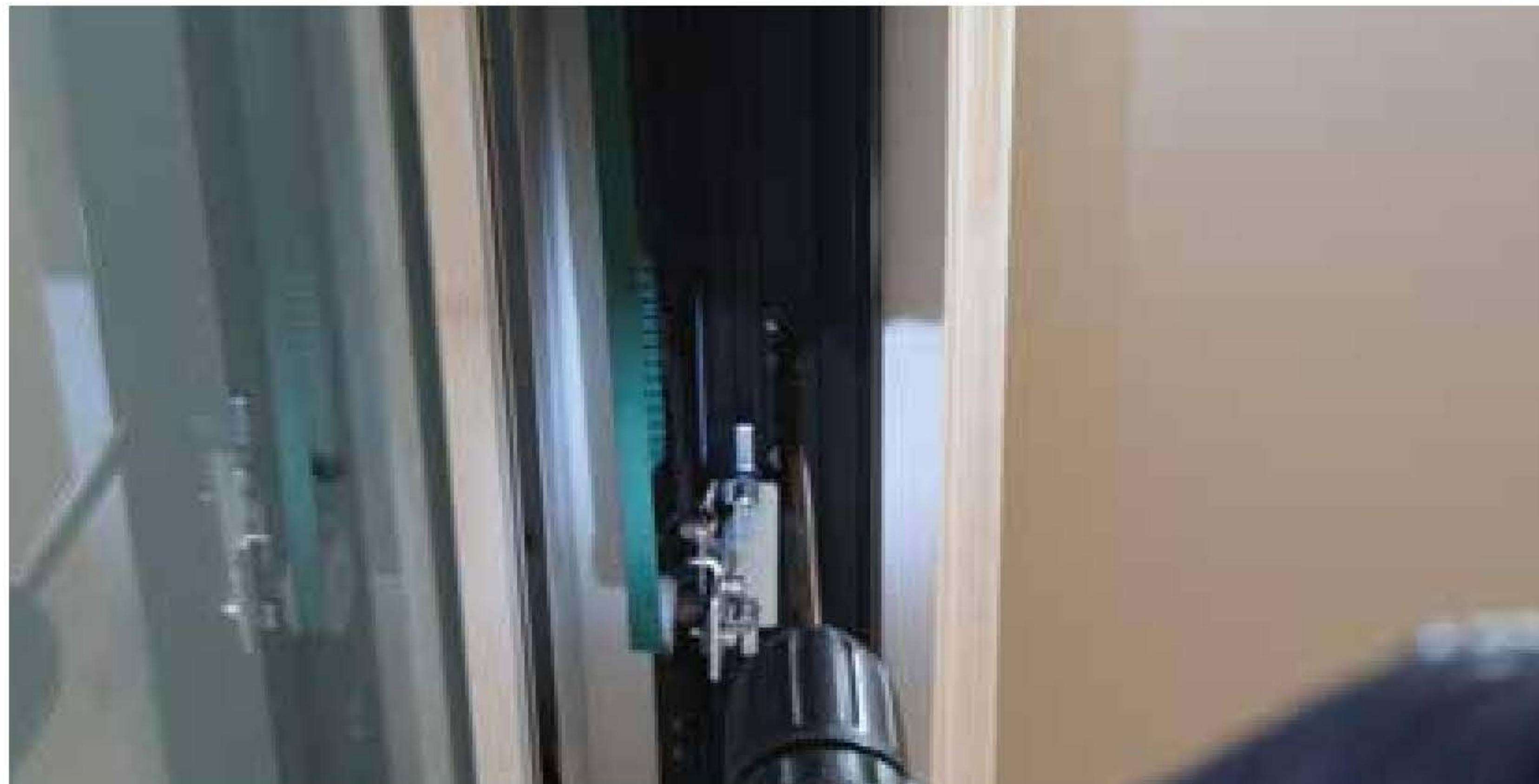


3. The distance between belt and door leaf is around 17mm



Installation of Mecahnism 2 (Top mounting)

4.Tighten the screw after install position is confirmed



5.move the belt connector to the middle of door leaf and ensure horizontal, then tighten screw



Installation of Mecahnism 2 (Top mounting)

6.Power on and adjust the operator (refer to page 16)



Data adjustment



Speed: adjustment of speed: open 10-41cm/S , Close 12-22cm/s

Slam mode: opening speed under 80%, open and close speed is same, opening speed higher than 80%, closing speed is half of opening

Without rubber: opening speed lower 50%, open and close speed is same, opening speed higher than 50%, closing speed is half of opening

Opening time: 0-20s (adjustable)

Learning button: Learning button of remote or wireless push button, added and delete remote process

Learning led: Remote learning indicator

There are five Mode available



- Automatic: the door will open when a sensor is triggered and close after the preset dwell time has elapse (all signal working normal)。
- Hold open mode: the door will open and remain open until another mode is select
- Lock mode: Door will close and remain closed until another mode is select by remote System will lock if there is a E-lock connect to it (In that mode, only remote signal is Available)
- Pet mode: For use with pet sensors and when a pet opening width has been set (see below). Will open the door to the pet opening width when any pet sensor is triggered and close after the preset dwell time has elapsed;
- manual model: the door can be manually operated, the system will not drive the door
- Function select button

Data adjustment

DIP function intro duction and setting

DIP switch	On (upwards)	Off(downwards)
1.Direction L/R	ON – Left opening, OFF – Right opening. Toggle (back and forth) to erase memory and re-learn open/close cycle.	
2.Toggle mode	Activate to open activate to close	Normal mode
3. Beeper *	Beeper enabled	Beeper disable
4.Door/window	Window mode	Door mode
5.Lock mode	Automatic lock after full closed	Lock only with full lock signal
6.Slam shut	With rubber	Normal operation

DIP Swtich 1 and 4 must power off and restart can switch mode

*This dip switch can only turn off the voice of remote , If need turn off the voice of wireless push button,it should press learning button , then switch on or off

Window mode :

Pet mode to half open mode

Turn to close signal (A)

- Photocell ☐ *
- Inside ☐ *

Turn to open signal (B)

- Outside ☐ *
- Pet ☐ *

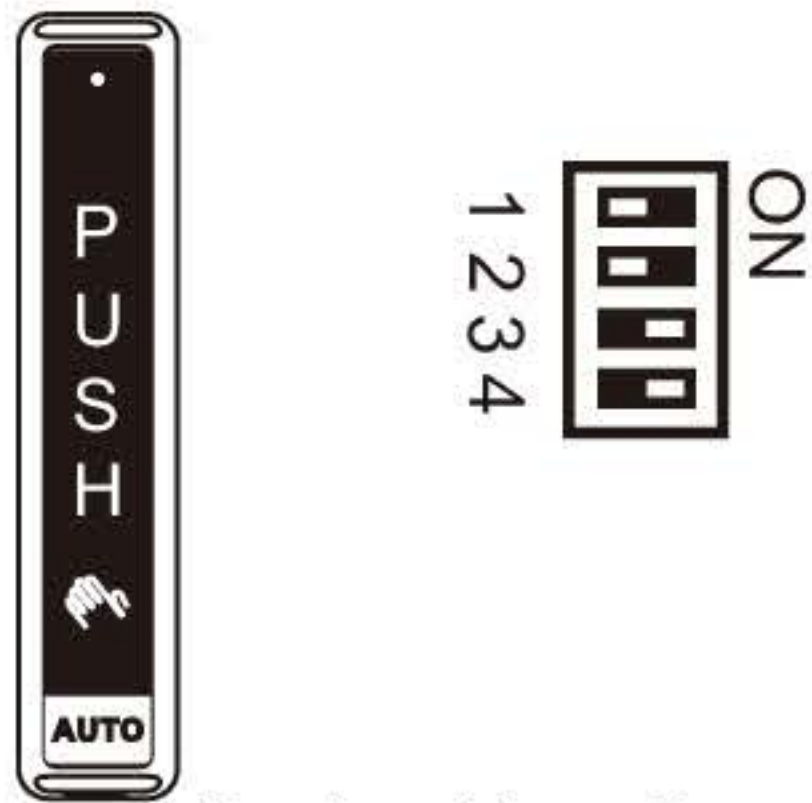
Active any terminal of A and B at same time, will work active to open or active to close (Attention: Must be one terminal from A and B active in same time)

Learning process:

- Turn on the power switch,ensure dip 1 is correct, if direction is wrong , Please switch the dip to opposite direction, turn off the power and make sure door/window fully closed,Then power on
- Opening width learning (pet) :
Pet mode indicator flash,door will start to open slowly ,Put obstacle atthe position u need, after short pause, door will close slowly, the learning process will done after door/window fully close, standard opening width learning
- All mode indicator flash, door:
Will open and close slowly, when door is fully close and automatic mode indicator lighting, learning process is done, controller is with memory of opening width

Setting of wireless push button

- 1. ADD:
Keep Press learning button 3second till the indicator turn blue, then press any button of remote , learning is done after indicator flash 3 times
- 2. Delet :
Keep press learning button till indicator turn flash from blue, after indicator flash 6times , all remote is deleted

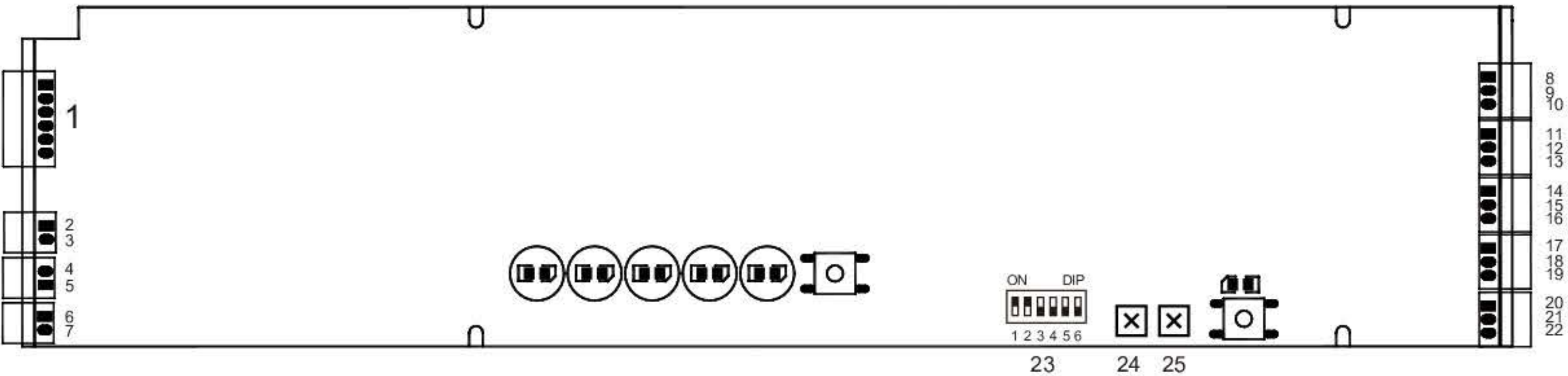


Please carefully checking dip switch selection is same as photo shown during learning process

Pw cut memory function:

All setting will be saved while power off, door will be close slowly after power on, then resume normal working (the working mode is same selection before power off) ; if need learning the opening width, power off, keep pressing function select button, then power on, release button after voice from controller, door will start learning turn

Terminal introduction



- 1、Motor terminal

2、DC24V+

3、GND

4、UPS+

5、UPS-

6、E-Lock-

7、E-lock+

8、Funciton select signal terminal

9、DC13V+
- 10、GND

11、Photocell signal terminal

12、DC13V+

13、GND

14、Inside sensor

15、DC13V+

16、GND

17、Outside sensor

18、DC13V+
- 19、GND

20、Pet signal terminal

21、DC13V+

22、GND

23、Function select dip switch

24、Open speed adjust knob

25、Opening time adjustment knob

Trouble analysis and Solution

SYMPTOM	CAUSE	SOLUTION
Door does not open fully after learn cycle	Incomplete learn cycle	Remove the external cover (if already fitted). Turn the system off at the controller switch. Close the door manually. Keep press function selector button and turn on the switch of controller.after heard Voice bi , Test again after the learn cycle has completed. Refit external cover.
Door can not full lock, door Door can not full lock,door open again after close	Not well suit of gear and rack	Check and adjust the suit condition of gear and rack, turn off the switch of controller, close the door manually, restart the system, Test again after learn cycle has completed , Refit extrnal cover
Door can not not fully open and close	There is resistance between system and door	Turn DIP 6 to rubber mode
Door stop at the open or close process, full lock and pet indicators flash	There is resistance between system and door	Find the resistance item and remove it
Door open without any commander	Cause1: remote signal interference Cause2: sensor setting is too sensitive	Solution 1: open cover, delet all remote memory and setting again Solution 2: take off the cover of senor , adjust sensitive by knob
Door/window can not open	Door is lock by E-lock	U-lock the system