

STANLEY®



A DIVISION OF:

STANLEY®
Security

EI 120

Automatic Swing Door Operator

Starhub Green , 67 Ubi Avenue 1 #02-13, Singapore 408942

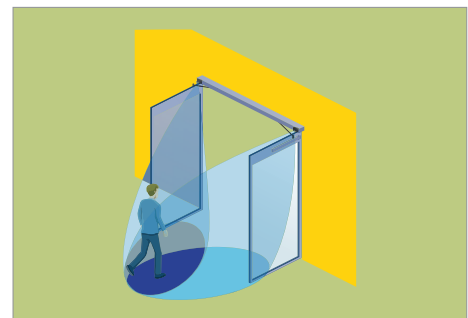
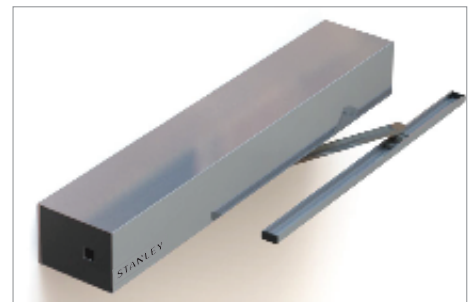


EI 120 AUTOMATIC SWING DOOR OPERATOR

EI 120 Swing Operator use planetary gear brush less motor technology. Ultra-quiet operation makes the operator more perfect and more convenient. Versatile interface technology has features inbuilt for dual door interlock, position feedback etc.,.

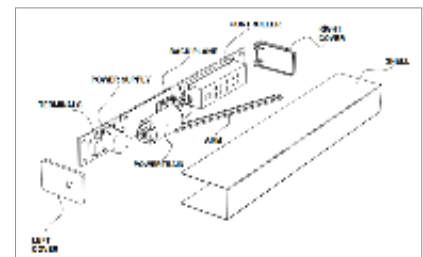
Automatic door applications market is very broad and can be widely used in Access control, building intercom, disabled access and washroom applications. Our swing operator is suitable for external and internal entrances of the building and ideal for wide range of environments like airports, commercial / residential buildings, hospitals, retail shops, hotels etc.,. Touchless entry provides comfort and make it possible for people to enter without having any obstacles.

EI 120 Technical Details	
Operator Dimension	550 x 80 x 105 MM
Door Width	600 to 1200 mm
Door Weight	120 kg Maximum
Opening Angle	90°
Hold Open Time	0.5 – 10 sec.
Opening Speed	Adjustable
Closing Speed	Adjustable
Power Supply	220/230 VAC
Power Frequency	50-60 Hz
Power Consumption	65-90 W
Fuse Protection	2.5 A
Temperature Range	-30 C° ~ +50 C°
Humidity Range	Relative Humidity Less Than 85%
Operator Applications	Push, Pull



FEATURES AND BENEFITS

- Push / Pull Application.
- Optional Safety Sensors.
- Sequencing for vestibules.
- Low to high abuse.
- Low-noise application.
- Elegant appearance.
- Easy mounting.
- Automatic overload protection.
- Intelligent protection to obstacles.
- Intelligent thermal protection.
- Integration with Access Control, Electric Locks, Fire Alarms and more.



Activation by sensors and other devices like remote control, access control push buttons, wave sensors etc.,.

